



Empowering
Communities
Pacific Blue
Community Fund

Funding. Local.

Over two decades of
empowering communities

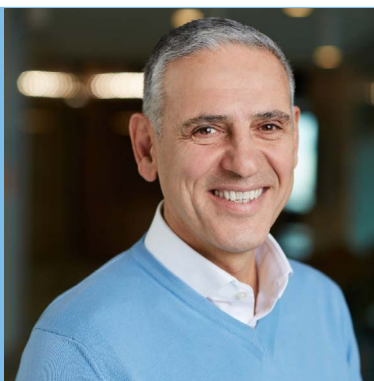


 PacificBlue

pacificblue.com.au



From our CEO.



I am delighted to share the wonderful and impactful community projects that Pacific Blue has supported this year. The contribution we have been able to provide in the communities surrounding our groundbreaking and innovative renewable projects is truly extraordinary. Our engagement, commitment and approach aims to establish and maintain respectful and collaborative relationships with the all communities we operate in. Recognising that community support is as critical to project success as are technical and financial factors, Pacific Blue endeavours to build, maintain and continually improve relationships and support for our projects.

Through these grant opportunities we aim to develop mutual trust and respect within host communities through adopting appropriate levels of transparent, open and collaborative engagement and communication at all stages of our projects.

We are committed to sharing the benefits of our projects with the communities that host them by creating lasting social, environmental, and economic value. We support community initiatives, build local capacity, and work together to find mutually agreed solutions to local challenges.

We hope that each of these projects showcase the best of our regional communities – partnership, collaboration and care for the environment and for future generations.

Domenic Capomolla

Chief Executive Officer Pacific Blue

About the Fund.

The Sustainable Communities Fund is our main community support in Clements Gap, Crowlands, Challicum Hills, Great South West, Haughton, Taralga, and Yaloak South. It provides financial support to community groups and organisations that are working to make a positive and lasting contribution.

We aim to support projects that are community priorities, provide lasting benefit, and address local need in one or more of these aspects.

Health and Welfare

Projects that enhance, support, and promote the health and welfare of the Aboriginal and Torres Strait Islander community, and community members, including relief of poverty, sickness, or distress.

Environment

Projects and initiatives that support the conservation and rehabilitation of the environment in the local area and/or help to reduce emissions, waste, and promote environmentally sustainable practices.

Education and Training

Projects that broaden access to and enhance the quality of education and training in the local region.

Cultural and Arts

Events, festivals, programs, and initiatives that foster, support, and promote a vibrant cultural, artistic, and community life.

Sport and Recreation

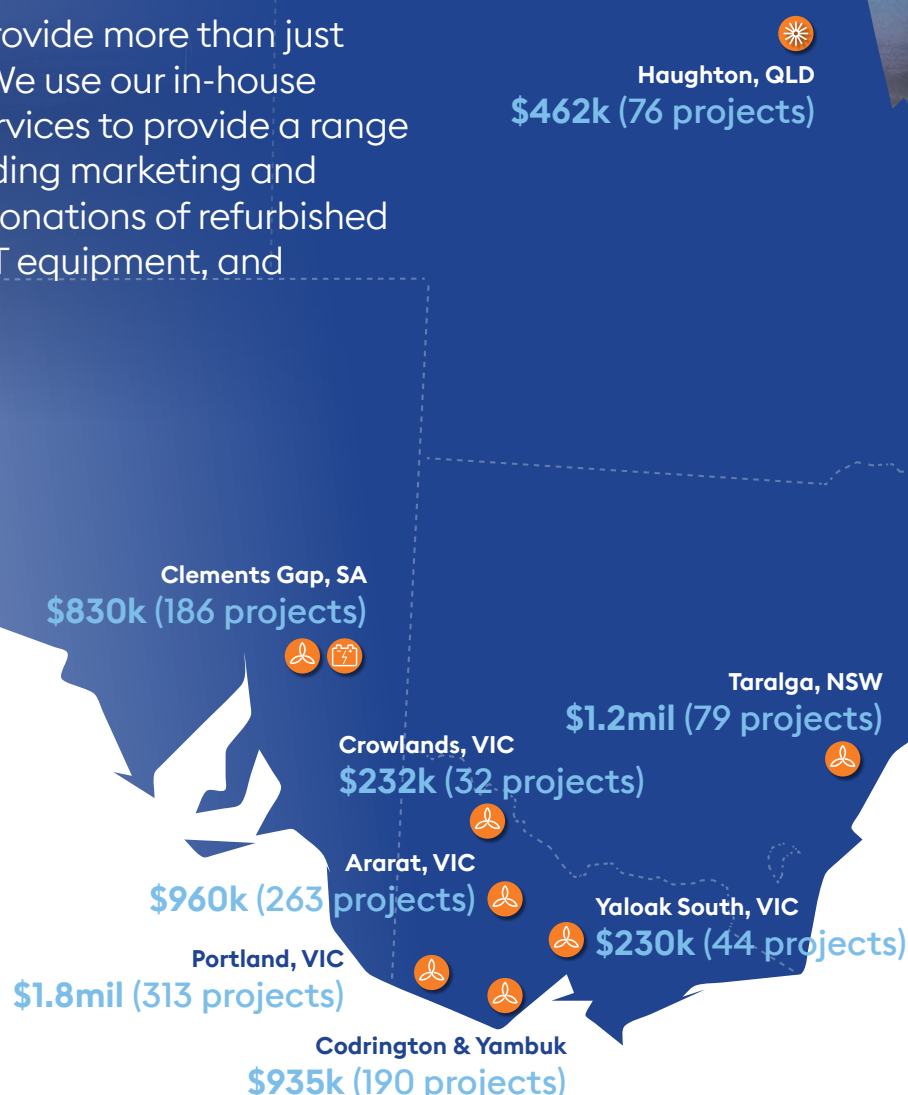
Projects that enhance, support, and promote healthy and active sport and recreational activities in the local community.

Our support.

Pacific Blue, formerly Pacific Hydro, has been a leader in community support for over 20 years. As one of the first companies in Australia to provide large-scale benefits to the communities surrounding renewable energy projects, we believe these communities should be recognised and rewarded for their part in supporting the transition to a renewable energy future.

Since its launch, the Sustainable Communities Fund has provided more than \$6 million to over 1000 local projects across regional Victoria, New South Wales, South Australia and Queensland.

Our partnerships provide more than just financial support. We use our in-house capabilities and services to provide a range of other help, including marketing and communications, donations of refurbished technology and ICT equipment, and workplace training.



Feature projects.



Project Platypus



Ararat West Primary School



Buangor & Middle Creek Fire Brigade



Crystal Brook Classic Athletics



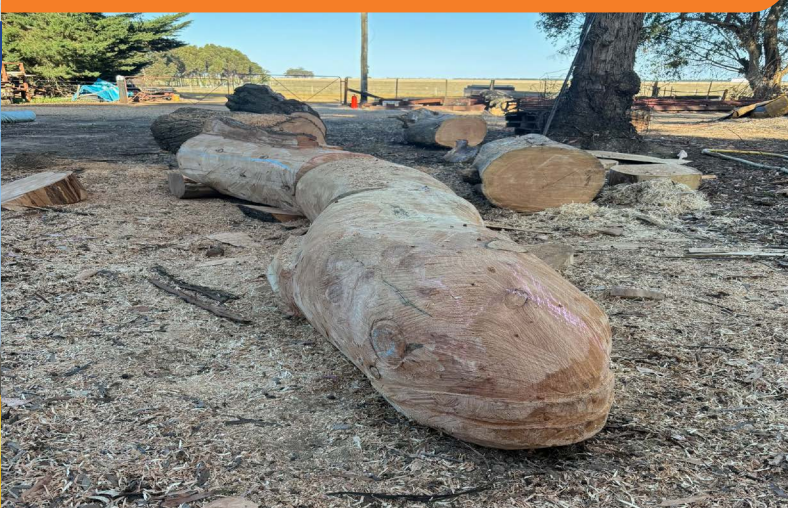
Port Broughton Hospital



Crowlands Warrack Landcare Group



Friends of the Great South Walk



Shortfinned Eel Sculpture



Home Hill Choral Society



Portland Yacht Club



Ayr Surf Life Saving Club

Project name:

The extraordinary Shortfinned eel sculpture

Location:

Lake Bolac, Victoria

The Lake Bolac Information & Business Centre (LBIBC) is a not for profit organisation that offers tourist and visitor information services for Lake Bolac town and functions as a community hub that has meeting rooms, art gallery, gift stores and library services. It also houses historical information and displays and has started to become a destination in the town for locals and visitors alike. The LBIBC used the grant provided by Pacific Blue to activate the area outside the centre with a piece of public art and were able to construct a wood carved large short finned eel sculpture, created by a local chainsaw artist.

The eel was chosen because Lake Bolac is home to the short finned eel. For thousands of years in late summer, Aboriginal clans from areas surrounding the lake gathered annually at the lake and along the Salt Creek, when the eels began their migration from the lake to the sea to spawn. This time was known as kuyang (eel) season and here at Lake Bolac eels were harvested, goods traded, ceremonies and important business held such as marriages, ceremony and lore. Now, eel populations have declined dramatically over the past 50 years in many regions of the world and short-finned eels are now considered “near threatened” by the International Union for the Conservation of Nature. Education about the Shortfinned Eel and the potential plight is needed and we can help by ensuring a continued understanding and respect for this creature and its long association with the area.

The sculpture has helped to educate the community about its plight, but also helped to make the centre and town a more appealing place as a destination and enhanced the sense of identity and character of the community.



Project name:

Ararat West Primary School Community Seating

Location:

Ararat, Victoria

Ararat West Primary School were looking for more ways to invite and create opportunities for connection with members of their school community. They identified a need for more seating, tables and areas to gather, and with the grant from Pacific Blue they were able to purchase picnic tables and bench seats to create an inviting outdoor play space within their play cubby village area allowing families, children and the community to sit, chat and play.

The space is now frequently used by families who have a chance to connect and meet at pick up and drop off times, but also by the rest of the community.



Project name:

Buangor Fire Brigade, New Equipment

Location:

Buangor, Victoria

The Buangor/Middle Creek Fire Brigade is a volunteer-run emergency service for Buangor and the surrounding district. Their core activities are the prevention and suppression of wildfire in an extremely fire-prone district, including the Challicum Hills wind farm. The brigade also provides emergency response to building fires, vehicle accidents and other incidents and natural disasters. When not fighting fires, the brigade is pro-actively recruiting new volunteers, and providing education and training to current volunteers. They have over 30 active volunteers in their brigade, a high participation-rate considering the total population of Buangor is just over 100.

With the support of the grant from Pacific Blue, the brigade were able to purchase new lightweight and easy to use equipment that was more fit for purpose compared to the full sized tanker and heavier chainsaws which required prerequisite training and qualifications. This meant that the volunteers can be deployed quickly to create safer and more reliable working environment for their volunteer emergency workers



Project name:

Crowlands Warrak Landcare Group New Equipment

Location:

Crowlands, Victoria

The Crowlands Warrak Landcare Group was founded in 1994 and was one of the first landcare groups to be formed in Victoria covering the Upper Wimmera Catchment. The group works with Project Platypus and other conservation efforts in the region, with a focus on revegetation of degraded sites, pest, weed and animal eradication, tree planting, improving water quality of the catchment (Wimmera River and Mount Cole Creek), enhancing land holders environmental & production outcomes and creating opportunities for social connection.

The group used the Pacific Blue grant to replace their old sprayer and purchase a new spray trailer. The spray trailer is an essential piece of equipment for the group as it is used for spraying weeds and fire prevention works. By having a piece of equipment that is community owned and used, local Landcare members have been able to have more interaction with their neighbors and peers. The sprayer has also been utilised by the Bush Gang, a project that allows current low risk prisoners to get involved in conservation efforts. Having a well maintained spray trailer in the area has been able to help with social and community involvement and the ability to have a functioning Landcare group.

With a coordinated approach to the river catchment their aim is to improve the environment and water quality and hope that platypus can be reintroduced into the Mount Cole Creek.



Project name:

Project Platypus

Location:

Wimmera, Victoria

Project Platypus is a not for profit group that has a 30-year history of bringing together local Landcare groups, schools and community members to address catchment-wide conservation issues in the upper Wimmera region of Victoria. They are a small team of people that cover skills from community engagement, education, revegetation, invasive pest and weed control to habitat protection.

In the past they have completed up to 30 ha of revegetation and 200 ha of pest control, all part of an overarching Grampians to Pyrenees Biolink plan. Their ongoing work establishes links between existing remnant reserves in the upper Wimmera Catchment, through a combination of habitat protection, revegetation and invasive pest control.

The funding received by Pacific Blue, allowed the group to empower and educate the local community to care for the local catchment through use of the latest eDNA testing and camera technologies. The kits helped to identify areas of high biodiversity value in Mount Cole creek and the Wimmera river and search for elusive platypus and rakali. They also hosted two public events with expert ecologists and hydrologists and shared the findings with the community to develop a plan to guide the future habitat protection for the area. Results of the eDNA tests will be shared with Pacific Blue.



Project name:

Friends of the Great South Walk

Location:

Portland, Victoria

Pacific Blue were able to support a voluntary community group called Friends of the Great South West Walk, an organisation established to promote and maintain a 262km walking loop along the coast of South West Victoria. The trail attracts locals as well as international tourists and the volunteers were using old equipment to maintain this vast area.

With the support of Pacific Blue, a 'gopher' or motorised wheelbarrow was purchased, allowing the volunteers to effectively maintain the walking trail. They also purchased a pressure washer which helped clean the machinery and stop transmission of weeds, and maintain the 14 camp sites that are scattered throughout the walk. The equipment has helped the volunteers significantly, making it easier to help and increased the time volunteers can commit and created more connection and community working together.



Project name:

Crystal Brook Classic Athletics

Location:

Crystal Brook, South Australia

Pacific Blue were proud to sponsor the Crystal Brook Classic community athletics carnival event. The event was created in 2020 after Covid, when the community needed to explore other sports activities outside the football season. An opportunity came about from the South Australian Athletic League to have an event north of Adelaide, and the community took that opportunity to host first of its kind country meet with races ranging from 70m to 1600m.

Now in its third year, the Classic is a free community event showcasing the best amateur athletes in the region with competitors and spectators from north SA, as well as from Adelaide and interstate. It's a major attraction for the local community, which is why Pacific Blue has been contributing to the event over the past 3 years through the Clements Gap Sustainable Community Fund.



Project name:

Port Broughton Hospital Face Lift

Location:

Port Broughton, South Australia

Port Broughton hospital needed a bit of an uplift! The hospital is a hub for first responders, and has a helipad should patients urgently need to be transported to the Royal Adelaide Hospital for further treatment.

A grant from Pacific Blue allowed the hospital to remove an old redundant canopy and replace it with a shaded area that improved the look, amenity and comfort for patients and visitors.

The upgrade has been used by people undergoing palliative care, making it an important part of the hospital. Pacific Blue were proud to be able to support the Port Broughton Hospital with this small but impactful improvement to the Port Broughton community.



Project name:

Home Hill Choral Society

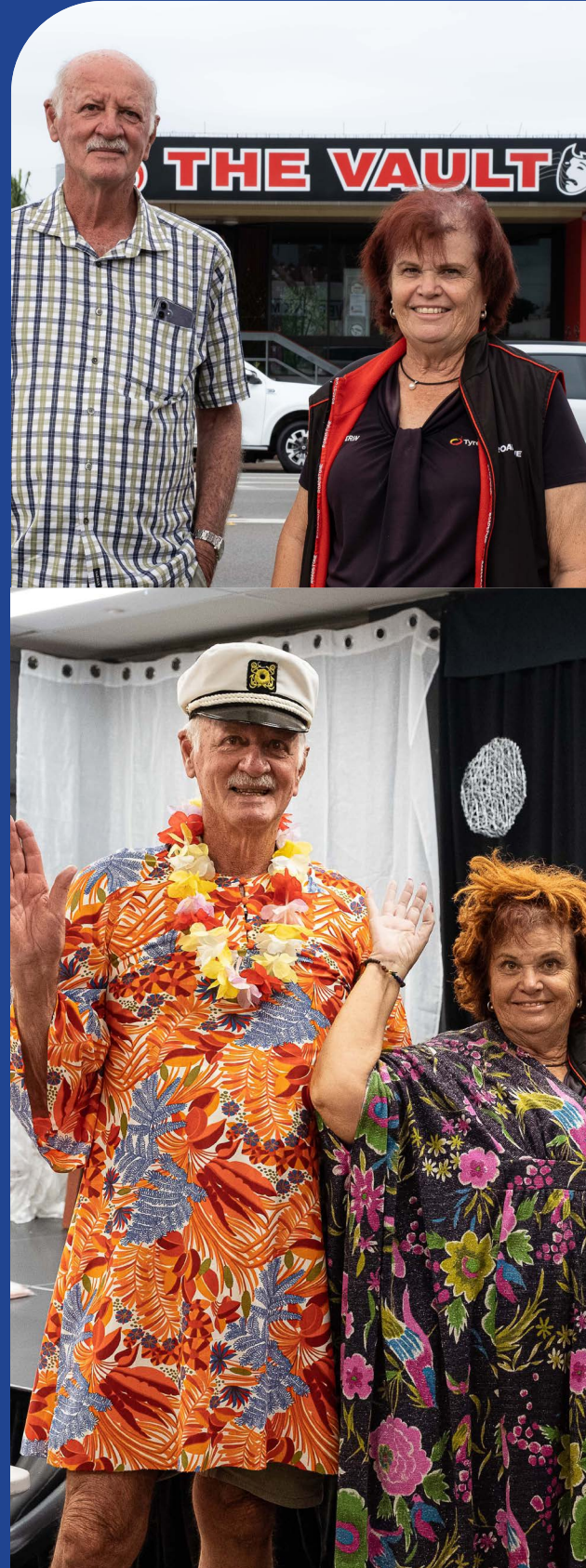
Location:

Home Hill, Queensland

Established in 1931 the Home Hill Choral Society has been singing and doing performances for the local community for over 100 years! They sing to patients at the local hospital, at local events and fundraisers to bring smiles and joy to people.

Pacific Blue were able to support the Choral Society to improve the exterior of the shopfront where they perform with improved signage with a sign writer and purchase a brand-new air conditioner for their building.

As Robert from Home Hill Choral Society shared with us in his interview “when you’ve got a happy choir you’ve got good performances!”



Project name:

Ayr Surf Life Saving Club

Location:

Ayr, Queensland

The Ayr Surf Life Saving Club is the oldest surf life saving club in the south east corner in Haughton. In 2026 it will be 100 years old! They are a club with 120 members, with half under the age of 16. With support from Pacific Blue they were able to purchase electronic roller doors and 3 new racing mals.

The club has a well-attended Lil Nippers programme so they were able to transition from junior boards to senior boards providing the kids with the chance to up skill and grow their abilities, and continue to provide a life line for keeping the legacy of club going with their younger cohort of members.



Project name:

Portland Yacht Club Training and Rescue Boat

Location:

Portland, Victoria

Portland Yacht Club were successful in receiving a grant from Pacific Blue to help fund replacement of their training and rescue boat. Established in 1969, it is a well known club in the area and has been growing in its membership and popularity especially amongst its female members.

The Portland community actively use their proximity to the sea and harbour for their recreation and Pacific Blue were proud to be able to support the club to upgrade their 40-year-old rescue boat, the purchase of a new trailer and construction of an impressive and robust new 6.3 m aluminium boat.





As a key part of Pacific Blue's community support strategy, our Community Benefit Sharing Program is an Australian wind industry first. This initiative ensures that the benefits of our renewable energy projects are shared directly with the communities that host them.

To learn more visit us at
<https://www.pacificblue.com.au/our-energy-production/community-funding> or scan the QR code



Pacific Hydro Pty Ltd trading
as Pacific Blue Australia.
ABN 31 057 279 508



1800 730 734



www.pacificblue.com.au



Level 13, 700 Collins Street
Docklands, VIC 3008

